



- /

(450) (P-chart) - - (30)

(Win QSB) (p-chart)

(% 0.06) (2)

(% 0.47) (%0.53)

(1093)

Statistical Quality Control of Industrial Products at the General Company for Vegetable Oils

Abstract

This research includes the using of statistical to improve the quality of can plastics which is produced at the state company for Vegetable oils (Almaamon factory) by using the percentage defective control chart (p-chart) of a fixed sample. A sample of size (450) cans daily for (30) days was selected to determine the rejected product . Operations research with a (win QSB) package for (p-chart) was used to determine test quality level required for product specification to justify that the process that is statistically controlled.

The results show high degree of accuracy by using the program and the mathematical operations (primary and secondary) which used to draw the control limits charts and to reject the statistically uncontrolled samples . Moreover a final chart was drawn to be used in the factory .

The research shows improvement of the can product by percentage (0.06 %), product defects percentage was lowered from (0.53 % to 0.47 %) for the production process which becomes statistically controlled .Also it was found that it was within Iraqi specification (1093).

(D.H.Besterfield)

. [3]

(Frederick W.Taylor)

Scientific)

1911

(Maragement

. [4]

1924

(Walter A . Shewhart)

()

. [5]

(Inspection Sampling Techniques)

Acceptance)

(Sampling Plans

V.F.Dodge and H.G)

1944

(Roming

. [6]

Edward)

1950

(Deming

. [1]

(J.M.Juran 1999)

. [2]

Deming



. [7]

. [10]

(Armand Fiegenbaum)
(Total Quality Control)

. [8]

1961

(Xie and Goh. 1999)

- 1

(Quality Control Circles)

1980 1970

. ()

Toquch)

Total)

design of Experiments DoE

]

(Quality Management

Failure Mode and ()

. [6

(FMEA) Effects Analysis

1980

Statistical)

(Process Control

11]

1990

. [ISO

(Pankaj et al 2000)

- 2

9000

Soft ware

. [9 3]

(Software)

Excel , Access , Sql Server ,)

. (Oracle , Text files

[16] Design of experiments

()

[12] (Web – Service)
(Qakland 2003) – 3
(Samipand Pandy 2010)

[17]

[14 13]

Chakraborti and Human) – 4
(2006
(P- Chart) (Parameter)

Random)
 $f_{(P)}$ (Variable

[18 6]

-1 P- Chart) $f_{(P)}$
(

[15]

(Judi et al 2009) – 5

-2

)

-3

-4

)

Quality function

[20 19] _____

six sigma

deployment



(30) - -1

(100)

(P) -)

(d) : (...

. m) -

$$P_i = \frac{d}{m}$$

(\bar{x} - chart

. (R - chart) -

) -

P^- - (σ - chart

-2

$$P^- = \frac{\sum_{i=1}^n P_i}{n}, \quad P^- = CL$$

: m ()

: n :

: d P -

(Central Line) : CL . - chart

: P_i -

30 - 1 : i . C - chart

- -

: . u- chart

3] (P-chart)

(Upper Control Limit)

[22 21

$$UCL (P^-) = P^- + 3 * \sqrt{\frac{P^- (1-P^-)}{m}}$$

P

(Lower Control Limit)

$$LCL (P^-) = P^- - 3 * \sqrt{\frac{P^- (1-P^-)}{m}}$$

:

) -

.(

P_i

()

(3) (2)
) (30) (p-chart)
(1
(450)

%100

-:

2010 / 10 / 3)

-1

) (2011 / 11 / 14

/ *

.(3

[23]

(1)

2

:

. (2) :

-

. (125) :

-

. (5 ±) :

-

. 450 =

-

)

)

/() -1

(2)

(4

-2

()

-3

(Win QSB)

[25 24] P-chart

(Win QSB Package)

(1)

-3

-

-4

-

)

(

- 5

-

-4

[26] (1093)

[1] - Ganther , W.G 1977, " Sampling Inspection in Statistic Quality control ",charles ritten and Company Ltd (London) .

-5

(P- chart)

[2] - Joseph M.Juran and A.Blatan Godfrey 1999, "JURAN 'S QUALITY HAND BOOK ", 5th ed ,Mc Graw – Hill, INC .

[3] – Dale H.Besterfiel , 2009 , "Quality Control" ,8th ed Prentice- Hill , New Jersey .

-6

[4] – James R.Evans , 2011 , " Quality Management , Organization and Strategy " , 6th ed South – Westen , Cengage Learning International Offices (Canada)

[5] – V.A Kulkarni and A.K Bewoor , 2009 , " Quality Control " , 1st ed , Wiley India Pvt . Ltd , New delhi .

-1

-chart)

[6] – B.Janakiraman and R.K.Gopal 2008 , "Total Quality Management: Text and Cases " , Prentice – Hill of India Private limited, New Delhi .

(P

[7] – V.K Khamna , prem , Vrat ,B.S.Shahay and Ravi Shankay , 2008 , "TQM Planning , Design and Implementation " ,1st ed , New Age International (P) Ltd .

-2

(Win QSB)

[17] - Serope kalpakgian , steven R. Schmid 2008 , " Manufacturing Processes for Engineering Materials " , 5th ed , prentice – Hill.

[18] – Doulges C. Montgomery 2005 , " Introduction to statistical quality control , 5th ed , USA – Willey .

[19] – William J, Steven son , 2007 , " Operations Management", 9th ed , Mc Graw – Hill, INC.

[20] – Marilyn K.Hart and Robert F.Hart 2007 , " Introduction to Statistical Process Control technigues " statit soft ware , Inc .

[21] – Vinay A.Kulkarni and Anand K . Bewoor . 2009 , " Quality control " , 1st ed , Wiley India Pvt.Ltd , New Delhi .

[22] – James R.Evans and William M . Lindsay 2011 , " The management and Control of Quality " , South – Westren , Cengage Learning (Canada) .

[23] - دليل الشركة العامة للزيوت النباتية – مصنع المامون ، قسم المنظف السائل والشامبو – تعليمات العمل لقسم المنظف السائل (الزاهي) – أيار – 2006 .

[24] د.خالد ضاري الطائي ، مروان عبد الحميد العتيبي ، محمد ناصر العشاري ، 2009 " تطبيقات وتحليلات النظام الكمي للأعمال Win QSB - مطبعة الذاكرة – بغداد .

[25] د.انعام عز الدين الصفار، صدى عبد الخالق الياسري ، 2009 "تحديد الانتاج الامثل في المعامل التابعة لقطاع التشبيد (معامل سمنت الكوفة حالة دراسية) ، المؤتمر العلمي الثاني لكلية الهندسة – جامعة القادسية .

[26] المواصفة القياسية العراقية (1093) الصادرة عن وزارة التخطيط – الجهاز المركزي للتقييس والسيطرة النوعية . (1986 : IQS 1093) .

[8] – Feigenbaum A.V 1999 , "Total Quality Control " , 3th ed , Mc Gaw – Hill , Inc , NewYork .

[9] – N.S Sreenivasan and V.Narayana , 2005 , " managineg Quality Control Tasks " , 1st ed , New Age International (P)Ltd , New Delhi .

[10] – James R.Evans and William M . Lindsay 2011 " the management and Control of Quality " , South - Western Cengage learning .

[11] – Xie , m and T.N Goh , 1999 , " Statistical Technigues for Quality " the TQM magazine . vol 11 , no4 . pp234 -241 .

[12] – Pakaj Jalotc , Senior Member , IEEE and Ashish Aexena .2002 , "Optimum Control Limits for Employing Statistical Process Control in Soft ware Process " , IEEE Transactions on Soft ware Engineering . Vol ,28 , No.12 .

[13] – Oakland , J.S. 2003 , Statistical Process Control , 5th ed , oxford :Butter worth – Heine maun "

[14] – Shoh samip and shridher pandy , 2010 " Control Chart Astatistical process control tools in pharmacy " , Assian Journal of pharama ceutics , vol . 4 , no.3 , pp . 184 – 192 1

[15] – S.chakvabortiand and S.w Human , 2006 , " Parameter Estimation and Perofmance of the p-Chart for Attributes Data " , IEEE Transactions on reliability , vol . 55 , no.3 .

[16] - Hairulliza Mohamad Judi , Ruzzakian Jenal and Devendran 2009 , " Some Experiences of quality Control Implementaion in Malaysian Companies " , European Journal of Scientific Research , vol . 27 , no . 1 , pp .24 – 45 .



(3)

الملاحظات	انواع الفحوصات الفنية				المرفوض (d)	المقبول	حجم العينة	الوقت	تاريخها	رقم العينة
	المظهر	التشقق	النضوح	الوزن (غم)						
	-	-	-	8	8	442	450	9:30-8:30	2010/10/3	1
	-	-	1	4	5	445	450	9:30-8:30	2010/10/4	2
	-	-	-	2	2	448	450	9:30-8:30	2010/10/5	3
	-	-	1	2	3	447	450	9:30-8:30	2010/10/6	4
	-	-	-	-	-	450	450	11:30-10:30	2010/10/7	5
	-	-	-	-	-	450	450	12:30-11:30	2010/10/10	6
	-	-	1	1	2	432	450	9:30-8:30	2010/10/11	7
	-	-	1	2	3	447	450	9:30-8:30	2010/10/12	8
	-	-	-	2	2	448	450	9:30-8:30	2010/10/13	9
	-	-	1	2	3	447	450	9:30-8:30	2010/10/14	10
	-	-	1	-	1	449	450	9:30-8:30	2010/10/17	11
	-	-	-	-	-	450	450	10:30-9:30	2010/10/18	12
	-	-	-	-	-	450	450	11:30-10:30	2010/10/19	13
	-	-	-	-	-	450	450	12:30-11:30	2010/10/20	14
	-	-	-	2	2	448	450	9:30-8:30	2010/10/21	15
	-	-	-	4	4	556	450	9:30-8:30	2010/10/24	16
	-	-	1	1	2	448	450	9:30-8:30	2010/10/25	17
	-	-	-	-	-	450	450	9:30-8:30	2010/10/26	18
	-	-	-	1	1	449	450	9:30-8:30	2010/10/27	19
	-	-	1	2	3	447	450	9:30-8:30	2010/10/28	20
	-	-	1	4	5	445	450	9:30-8:30	2010/11/1	21
	-	-	1	3	4	446	450	9:30-8:30	2010/11/2	22
	-	-	-	-	-	450	450	1:30-12:30	2010/11/3	23
	-	-	-	4	4	446	450	9:30-8:30	2010/11/4	24
	-	-	1	2	3	447	450	9:30-8:30	2010/11/7	25
	-	-	-	4	4	446	450	9:30-8:30	2010/11/8	26
	-	-	-	4	4	446	450	9:30-8:30	2010/11/9	27
	-	-	1	3	4	446	450	9:30-8:30	2010/11/10	28
	-	-	-	-	-	450	450	12:30-11:30	2010/11/11	29
	-	-	-	3	3	447	450	9:30-8:30	2010/11/14	30



(2)

(3)

QCC Problem Specification

Quality Characteristics

Variable Data

Attribute Data

Problem Title:

Number of Qty. Characteristics: **Size of Subgroups:**

Number of Subgroups: **Note: The above is the initial setup. You can modify it later.**

(4)

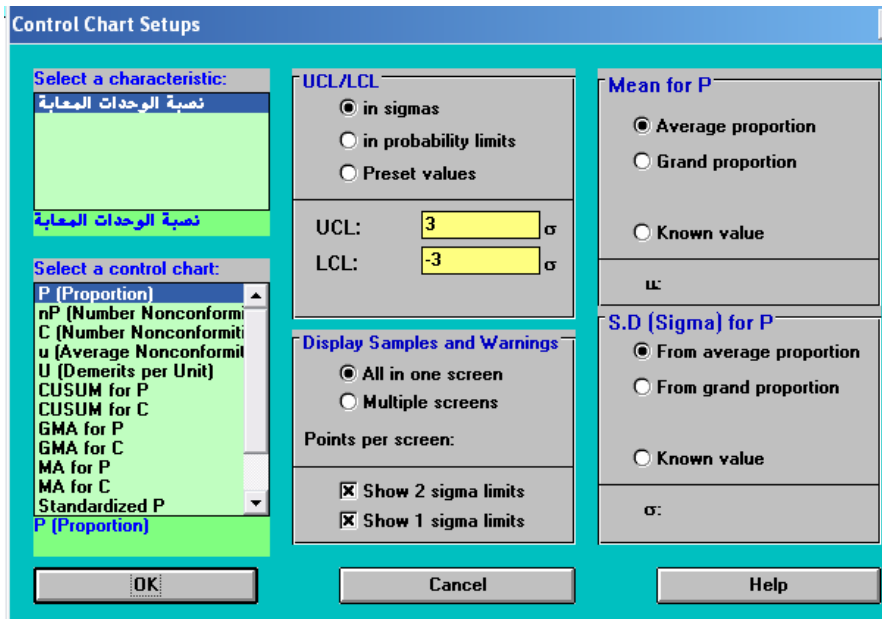


Subgroup	Date	Time	Size	الوزن	النضوج	التشقق	المظهر	Disabled	Cause	Action	Comment
1	3/10/2010	8.30:9.30	450	8	0	0	0				
2	4/10/2010	8.30:9.30	450	4	1	0	0				
3	5/10/2010	8.30:9.30	450	2	0	0	0				
4	6/10/2010	8.30:9.30	450	2	1	0	0				
5	7/10/2010	1.30:11.30	450	0	0	0	0				
6	0/10/2010	.30:12.30	450	0	0	0	0				
7	1/10/2010	8.30:9.30	450	1	1	0	0				
8	2/10/2010	8.30:9.30	450	2	1	0	0				
9	3/10/2010	8.30:9.30	450	2	0	0	0				
10	4/10/2010	8.30:9.30	450	2	1	0	0				
11	7/10/2010	8.30:9.30	450	0	1	0	0				
12	8/10/2010	1.30:10.30	450	0	0	0	0				
13	9/10/2010	1.30:11.30	450	0	0	0	0				
14	0/10/2010	.30:12.30	450	0	0	0	0				
15	1/10/2010	8.30:9.30	450	2	0	0	0				
16	4/10/2010	8.30:9.30	450	4	0	0	0				
17	5/10/2010	8.30:9.30	450	1	1	0	0				
18	6/10/2010	8.30:9.30	450	0	0	0	0				
19	7/10/2010	8.30:9.30	450	1	0	0	0				
20	8/10/2010	8.30:9.30	450	2	1	0	0				
21	1/11/2010	8.30:9.30	450	4	1	0	0				
22	2/11/2010	8.30:9.30	450	3	1	0	0				
23	3/11/2010	2.30:1.30	450	0	0	0	0				
24	4/11/210	8.30:9.30	450	4	0	0	0				
25	7/11/2010	8.30:9.30	450	2	1	0	0				
26	8/11/2010	8.30:9.30	450	4	0	0	0				
27	9/11/2010	8.30:9.30	450	4	0	0	0				
28	0/11/2010	8.30:9.30	450	3	1	0	0				
29	1/11/2010	.30:12.30	450	0	0	0	0				
30	4/11/2010	8.30:9.30	450	3	0	0	0				

(5)

Subgroup	Date	Time	Size	نسبة الوحدات	Disabled	Cause	Action	Comment
1	3/10/2010	00:16:22	450	0.0178				
2	4/10/2010	8.30:9.30	450	0.0111				
3	5/10/2010	8.30:9.30	450	0.0044				
4	6/10/2010	8.30:9.30	450	0.0067				
5	7/10/2010	1.30:11.30	450	0				
6	0/10/2010	.30:12.30	450	0				
7	1/10/2010	8.30:9.30	450	0.0044				
8	2/10/2010	8.30:9.30	450	0.0067				
9	3/10/2010	8.30:9.30	450	0.0044				
10	4/10/2010	8.30:9.30	450	0.0067				
11	7/10/2010	8.30:9.30	450	0.0022				
12	8/10/2010	1.30:10.30	450	0				
13	9/10/2010	1.30:11.30	450	0				
14	0/10/2010	.30:12.30	450	0				
15	1/10/2010	8.30:9.30	450	0.0044				
16	4/10/2010	8.30:9.30	450	0.0088				
17	5/10/2010	8.30:9.30	450	0.0044				
18	6/10/2010	8.30:9.30	450	0				
19	7/10/2010	8.30:9.30	450	0.0022				
20	8/10/2010	8.30:9.30	450	0.0067				
21	1/11/2010	8.30:9.30	450	0.0111				
22	2/11/2010	8.30:9.30	450	0.0088				
23	3/11/2010	2.30:1.30	450	0				
24	4/11/210	8.30:9.30	450	0.0088				
25	7/11/2010	8.30:9.30	450	0.0067				
26	8/11/2010	8.30:9.30	450	0.0088				
27	9/11/2010	8.30:9.30	450	0.0088				
28	0/11/2010	8.30:9.30	450	0.0088				
29	1/11/2010	.30:12.30	450	0				
30	4/11/2010	8.30:9.30	450	0.0067				

(6)



P – chart : (7)



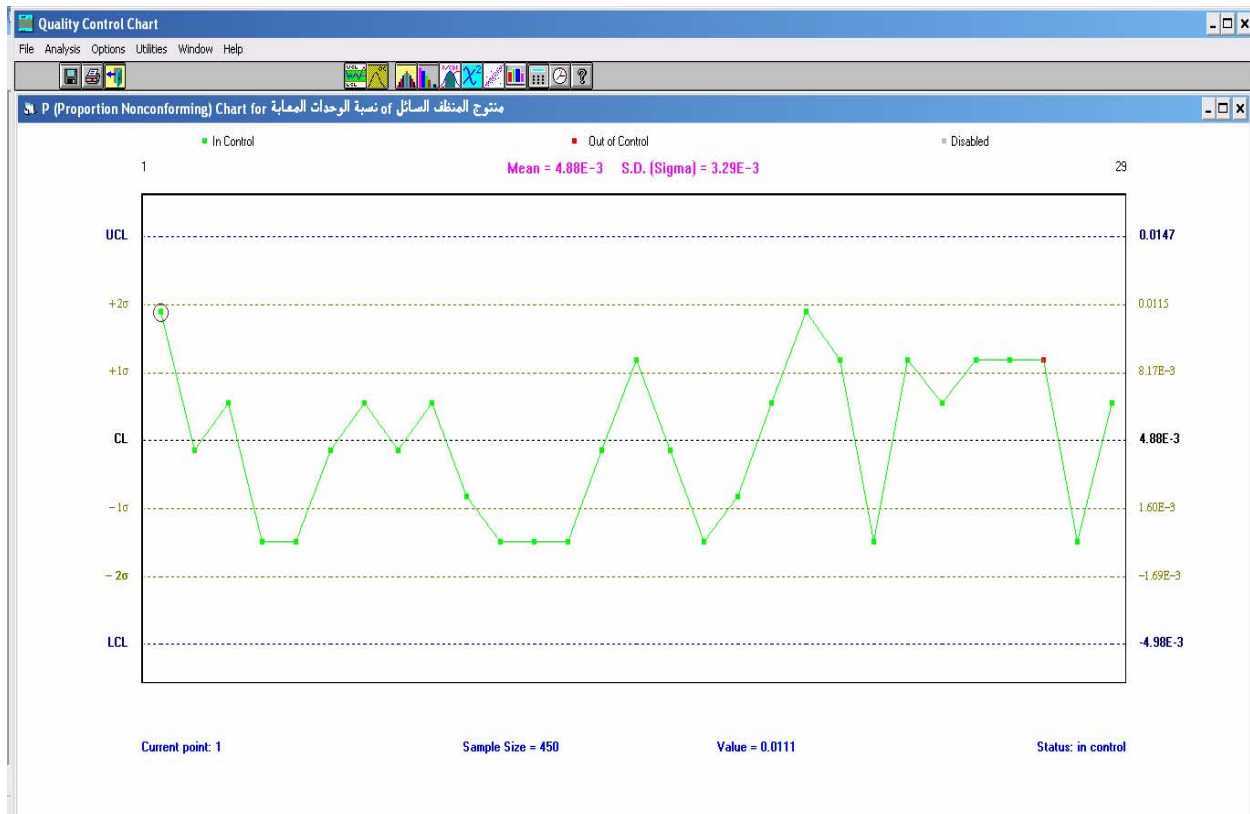
P – chart : (8)



Subgroup	Date	Time	Size	نسبة الوحدات	Disabled	Cause	Action	Comment
1	4/10/2010	8.30:9.30	450	0.0111				
2	5/10/2010	8.30:9.30	450	0.0044				
3	6/10/2010	8.30:9.30	450	0.0067				
4	7/10/2010	1.30:11.30	450	0				
5	07/10/2010	.30:12.30	450	0				
6	1/10/2010	8.30:9.30	450	0.0044				
7	2/10/2010	8.30:9.30	450	0.0067				
8	3/10/2010	8.30:9.30	450	0.0044				
9	4/10/2010	8.30:9.30	450	0.0067				
10	7/10/2010	8.30:9.30	450	0.0022				
11	8/10/2010	1.30:10.30	450	0				
12	9/10/2010	1.30:11.30	450	0				
13	0/10/2010	.30:12.30	450	0				
14	1/10/2010	8.30:9.30	450	0.0044				
15	4/10/2010	8.30:9.30	450	0.0088				
16	5/10/2010	8.30:9.30	450	0.0044				
17	6/10/2010	8.30:9.30	450	0				
18	7/10/2010	8.30:9.30	450	0.0022				
19	8/10/2010	8.30:9.30	450	0.0067				
20	1/11/2010	8.30:9.30	450	0.0111				
21	2/11/2010	8.30:9.30	450	0.0088				
22	3/11/2010	2.30:1.30	450	0				
23	4/11/2010	8.30:9.30	450	0.0088				
24	7/11/2010	8.30:9.30	450	0.0067				
25	8/11/2010	8.30:9.30	450	0.0088				
26	9/11/2010	8.30:9.30	450	0.0088				
27	0/11/2010	8.30:9.30	450	0.0088				
28	1/11/2010	.30:12.30	450	0				
29	4/11/2010	8.30:9.30	450	0.0067				

(1)

(9)



(10)